

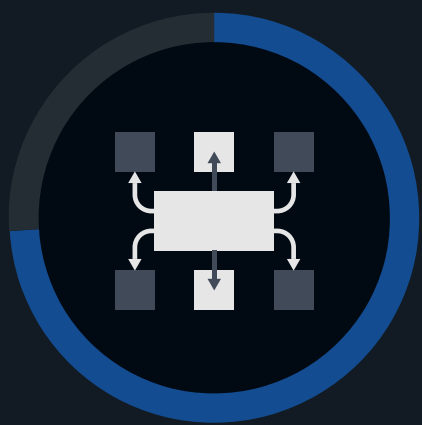
Cyber-risk Management Best Practices

Today's business technology ecosystems consist of hybrid or multi-cloud environments, ephemeral assets, expanding attack surfaces, external connections, and dynamic cloud-native applications. These infrastructure complexities present new challenges for asset visibility, understanding attack surfaces, securing business-critical assets, and managing their associated risk. TechTarget's Enterprise Strategy Group recently surveyed IT and cybersecurity professionals to gain insight into trends surrounding the challenges of addressing modern cyber-risk.

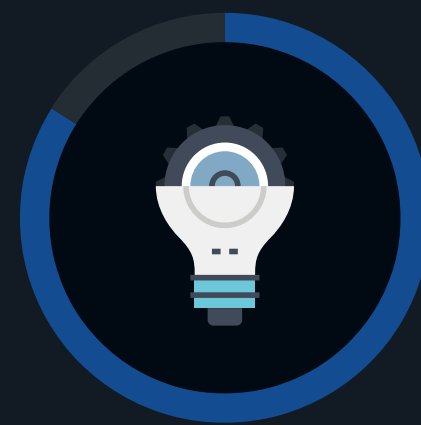
Notable findings from this study include:



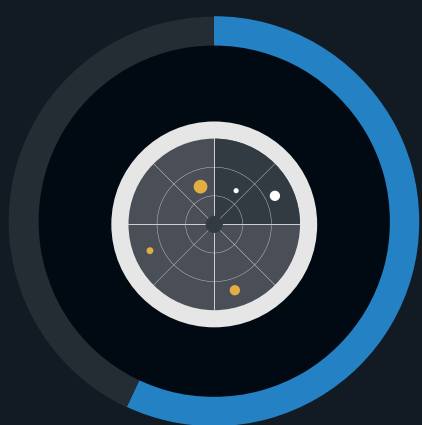
65%
of organizations believe cyber-risk management is **more difficult than it was two years ago.**



74%
of organizations have a defined process to assess overall cyber-risk posture.



84%
of organizations are working toward a more centralized risk management strategy.



57%
of organizations spend at least 40 hours to complete an external attack surface scan.



77%
of organizations conduct penetration testing and red team exercises to get ahead of attacks.

For more from this Enterprise Strategy Group study, read the full research report, **Cyber-risk Management Best Practices.**

[LEARN MORE](#)